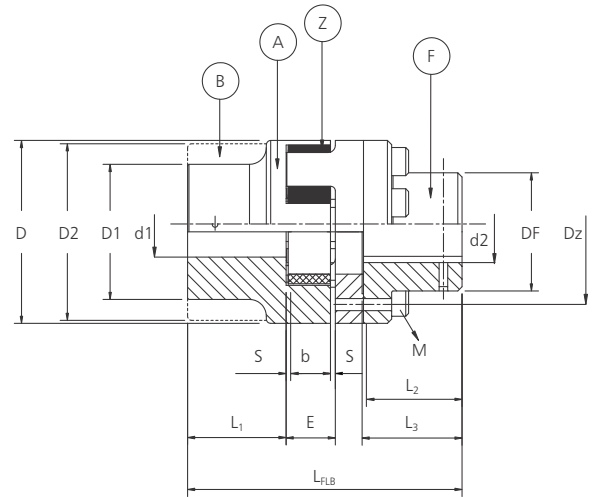
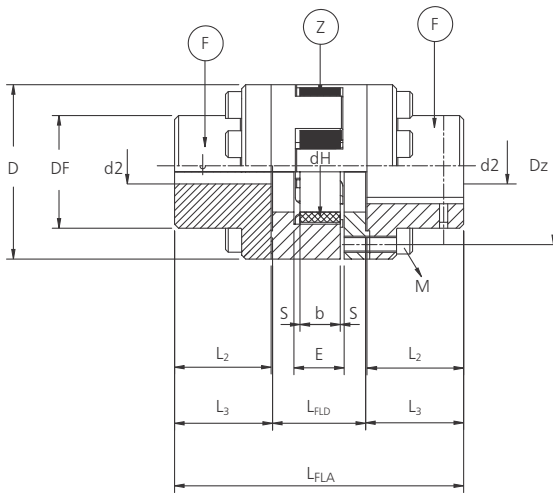


# UTL UTEX (BOLTED HUB)TYPE COUPLINGS



## FEATURES

- For general machinery
- Radial assembly of driving or driven machine after disassembly of driving flanges
- Power flow can be disconnected while coupling is installed

## Dimensions & Technical Data

Size	Finish bore mm			Dimensions in mm																No. of Screws 2	Angle 1	
	d1	Prebored d2	d2 max.	L <sub>FLA</sub>	L <sub>FLB</sub>	L <sub>FLD</sub>	L <sub>1</sub>	L <sub>2</sub>	L <sub>3</sub>	E	b	s	ØD	ØD1	ØD2	D <sub>F</sub>	D <sub>Z</sub>	d <sub>H</sub>	M			T(Nm)
24	10	7	24	94	86	34	30	30	30.5	18	14	2	55	40	55	36	45	27	M5x16	10	8	8x45°
28	12	9	28	110	100	40	35	35	35.5	20	15	2.5	65	48	65	42	54	30	M6x20	17	8	8x45°
38	14	13	38	134	124	44	45	45	45.5	24	18	3	80	66	79	52	66	38	M8x22	41	8	8x45°
42	19	13	42	150	138	50	50	50	51	26	20	3	95	75	94	62	80	46	M8x25	41	12	16x22.5°
48	19	16	48	164	152	52	56	56	57	28	21	3.5	105	85	102	70	90	51	M8x25	41	12	16x22.5°
55	19	16	55	192	176	62	65	65	66	30	22	4	120	98	118	80	102	60	M10x30	83	8	8x45°
65	22	18	65	217	201	67	75	75	76	35	26	4.5	135	115	132	94	116	68	M10x30	83	12	16x22.5°
75	30	25	75	248	229	78	85	85	86.5	40	30	5	160	135	158	108	136	80	M12x40	120	15	20x18°
90	40	29	100	285	265	85	100	100	101.5	45	34	5.5	200	160	196	142	172	100	M16x40	295	15	20x18°
100	-	29	110	320	295	100	110	110	111.5	50	38	6	225	180	-	158	195	113	M16x50	295	15	20x18°

- 1 - Thread in driving flange E between the cams
- 2 - Coupling is supplied unassembled

## MATERIAL SPECIFICATIONS

Hub	Size - 24 - 100	Cast Iron	CI	EN - GJL - 250 (GG 25)
Spider 92° Shore A (Yellow colour)	Size - 24 - 100	Polyurethane	PU	
Spider 98° Shore A (Red colour)	Size - 24 - 100	Polyurethane	PU	

• For temperature range of elastomers please see on page no. 34 - coupling selection

**UTKARSH TRANSMISSIONS PVT. LTD.**

