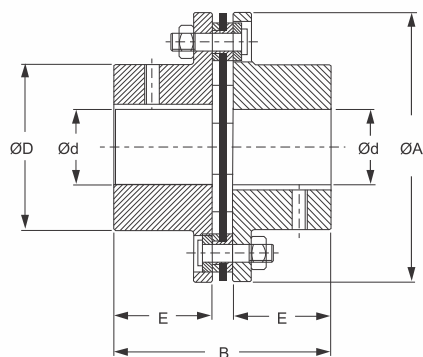
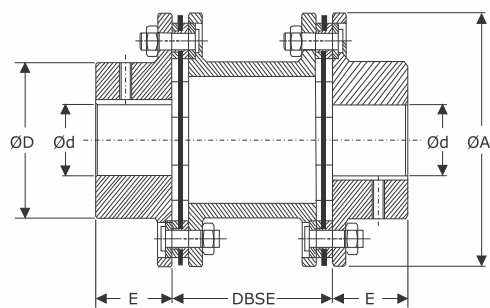


UTL UMS2 / UMK2 COUPLINGS

(Metalflex Couplings)



FEATURES

- Power to weight ratio high
- Accommodates angular and axial misalignments
- High temperature application
- Visual inspection is possible without dismantling equipments
- Low axial stiffness with high torsional rigidity
- High-speed capacity
- Range up to 12000 Nm
- Added advantage of stretch fitted shim pack

Dimensions & Technical Data

Size	Rated Torque Nm	Max. Speed rpm	Max. Bore Ød	Dimensions are in mm						Torsional Stiffness Nm/radial Approx
				DBSE	E	ØA	ØD	B		
								UMK2	UMS2	
20	15	20000	20	60	20	56	32	45	100	0.017
25	30	16000	25	60	25	68	40	56	110	0.028
35	60	13000	35	70	40	82	54	86	150	0.092
38	120	12000	38	80	45	94	58	98	170	0.198
42	180	10000	42	80	45	104	68	100	170	0.282
50	330	8000	50	96	55	126	78	121	206	0.501
60	690	6700	60	96	55	138	88	121	206	0.560
70	1100	5900	70	116	65	156	102	141	246	0.900
80	1500	5100	80	136	75	179	117	164	286	1.140
85	2400	4750	85	140	80	191	123	175	300	1.520
90	4500	4300	90	140	80	210	132	175	300	1.940
105	5100	4000	105	160	90	225	147	200	340	2.540
115	9000	3400	115	170	100	265	163	223	370	3.480
135	12000	3000	135	250	135	305	184	297	520	6.850

• For non standard DBSE Please contact UTL

MATERIAL SPECIFICATIONS

Hub	Size- 20 - 135	Steel C 40	St	EN/DIN 10263-2
Spacer	Size- 20 - 135	Steel C 40	St	EN/DIN 10263-2
Disc Pack	Size- 20 - 135	Stainless Steel	SS	



• For temperature range of elastomers please see on page no. 34 - coupling selection