

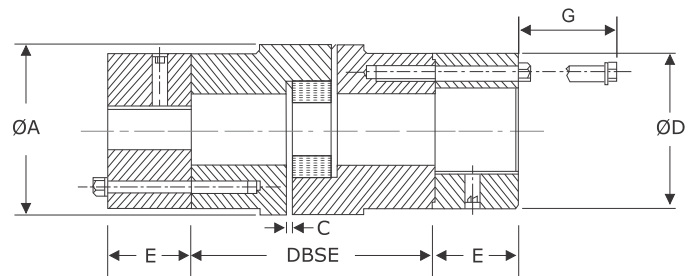


UTL FLEXIBLE COUPLINGS

**Utkarsh**  
FLEXIBLE COUPLINGS  
Revolutionizing Rotation



**UTL USS COUPLINGS**  
(Spider Elastomer with Spacer)



**FEATURES**

- Simple construction, quick and easy installation
- Spider design presets correct distance between hubs, using raised dimple on leg of the Spider
- Without disturbing the pump alignment & piping etc, maintenance is possible. Can also be used where quick disconnection of drive and driven units is required like compressors, generator & blowers etc.
- Range up to 265 Nm
- Maximum permissible misalignment: angular 1°, parallel 0.4 mm & axial 3 mm (initial alignment must be 25 % of maximum)

**DIMENSIONS & TECHNICAL DATA**

Size	Rated Torque Nm	kW Rating at			Dimensions are in mm								Torsional Stiffness Nm / rad	Weight in Kg approx	Moment of inertia (kg.m <sup>2</sup> )
		100 rpm	1500 rpm	3000 rpm	Min. Bore	Max. Bore	DBSE	ØA	ØD	E	C	G			
095	21.10	0.220	3.30	6.60	10	30	90, 100, 140	54	54	25	2	20	275	2.31	On request UTL will provide data. According to spacer length.
100	46.40	0.490	7.35	14.70	10	38	90, 100, 140	65	65	30	2	20	688	4.38	
110	89	0.930	13.95	27.90	15	42	90, 100, 140, 180	85	76	35	3	21	1719	5.62	
150	141	1.490	22.35	44.70	15	48	90, 100, 140, 180	96	90	40	3	27	2120	7.95	
190	190	2.010	30.15	60.30	20	55	90, 100, 140, 180	115	102	46	3	27	3495	11.57	
225	265	2.760	41.40	82.80	20	65	90, 100, 140, 180	127	115	52	3	21	4584	13.72	

• For non standard DBSE please contact UTL

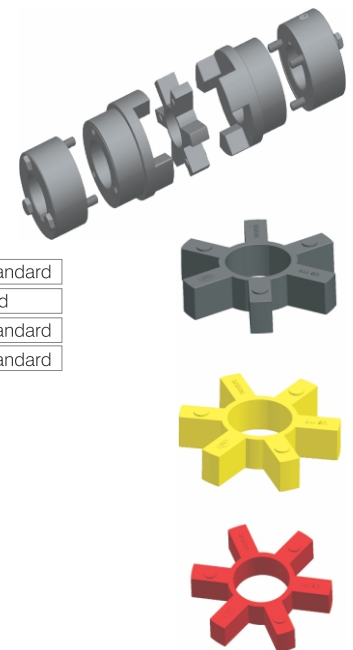
**MATERIAL SPECIFICATIONS**

Jaw	Size - 095-225	Cast Iron	CI	DIN 1693 GG 25
Adaptor	Size - 095-225	Cast Iron	CI	DIN 1693 GG 25
Spider 80° Shore A	All Size	Synthetic Rubber	NBR	ASTM D2000 BG 810
Hex Bolt	All Size	High Tensile	St	ISO 4014 : Gr 8.8

• Alternative Spider for higher power ratings is available on request.

Spider 92° Shore A	All Size	Synthetic Rubber	NBR	ASTM D2000 BG 910	Torque 1.6 times of standard
Spider 80° Shore A	All Size	Synthetic Rubber	EPDM	ASTM D2000 AA 810	Torque as per standard
Spider 92° Shore A (Yellow Colour)	All Size	Polyurethane	PU		Torque 1.8 times of standard
Spider 98° Shore A (Red Colour)	All Size	Polyurethane	PU		Torque 2.5 times of standard

• Max speed not to exceed surface speed V = 35m / sec



• For temperature range of elastomers please see on page no. 47 - coupling selection  
www.utlcoupling.com