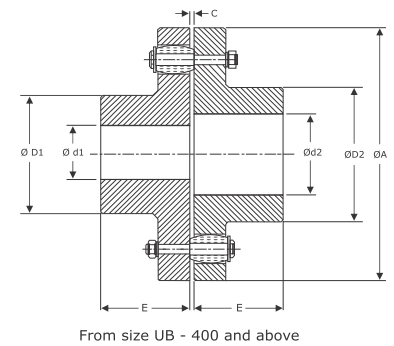
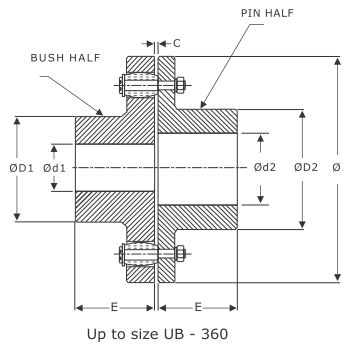




UTL FLEXIBLE COUPLINGS

Utkarsh
FLEXIBLE COUPLINGS
Revolutionizing Rotation



FEATURES

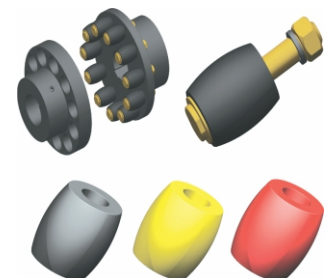
- Assembling and dismantling is very easy
- By removing the pins, prime mover can be run independently
- Standard bushes (element) in natural rubber
- After removing the pins, the hub with shaft can be removed upwards without disturbing the alignment
- The flexible bushes remain unaffected by water, dust and atmospheric conditions
- Range up to 160000 Nm
- Working temperature up to 70° C

DIMENSIONS & TECHNICAL DATA

Size	Rated Torque Nm	kW Rating at 100 rpm	Maximum speed rpm	Dimensions are in mm								Max. Misalignment			No of holes	Pin Name	Bush Name	Weight in kg approx	Moment of Inertia (kg.m ²)
				Min. Bore	Max. Bore		ØA	ØD1	ØD2	E	C	Angular (°)	Parallel (mm)	Axial (mm)					
					Ød1	Ød2													
105	95	1.00	7200	11	30	32	105	48	50	45	2-6	1°	0.3	2	3	UB 10	UB 10	2.682	0.003
116	146	1.53	6100	12	39	42	116	60	68	45	2-6	1°	0.3	2	4			3.575	0.005
125	166	1.73	5500	14	45	50	125	68	78	50	2-6	1°	0.4	2	4			4.891	0.007
144	318	3.33	4900	18	50	60	144	82	91	55	2-6	1°	0.4	2	6			6.679	0.012
162	525	5.50	4500	22	60	65	162	89	100	60	2-6	1°	0.4	2	6	UB 20	UB 20	9.393	0.030
178	643	6.73	3800	24	70	75	178	105	115	70	2-6	1°	0.5	2	6			13.306	0.040
198	1248	13.07	3400	28	80	90	198	124	135	80	2-6	1°	0.5	2	10			18.37	0.062
228	2050	21.47	3000	28	90	100	228	133	146	90	4-10	1°	0.6	3	11	UB 30	UB 30	27.241	0.100
252	3069	32.13	2700	38	105	115	252	156	167	100	4-10	1°	0.6	3	12			37.005	0.170
285	4552	47.67	2400	48	115	125	285	170	186	110	4-10	1°	0.7	3	11	UB 40	UB 40	52.163	0.310
320	6099	63.87	2100	55	125	135	320	196	212	125	4-10	1°	0.7	3	12			74.359	0.530
360	8900	93.20	1900	65	135	150	360	212	232	140	4-12	1°	0.9	4	11	UB 50	UB 50	105.055	1.020
400	12051	126.20	1700	75	160	160	400	230	230	160	4-12	1°	1.1	4	10	UB 60	UB 60	133.63	1.700
450	18602	194.80	1500	85	180	180	450	260	260	180	4-12	0.5°	1.1	4	12			183.734	2.900
500	25802	270.20	1350	95	200	200	500	290	290	200	4-12	0.5°	1.1	4	14			244.977	4.700
560	31003	324.67	1200	95	225	225	560	320	320	220	4-8	0.5°	1.5	2	10	UB 70	UB 70	390.925	10.700
630	41998	439.80	1050	100	250	250	630	355	355	240	4-8	0.5°	1.5	2	12			519.049	17.400
710	75000	785.40	950	100	260	260	710	385	385	260	5-9	0.5°	1.8	2	12	UB 80	UB 80	711.633	33.000
800	100000	1047.20	850	100	280	280	800	420	420	290	5-9	0.5°	1.8	2	14			984.192	53.000
900	160000	1623.13	750	100	305	305	900	465	465	320	5-9	0.5°	1.8	2	16			1299.423	86.000

MATERIAL SPECIFICATIONS

Hub	Size - 105-360	Cast Iron	CI	DIN 1693 GG 25
Hub	Size - 360 - 900	Cast Iron	CI	DIN 1693 GG 25
Bush 80° Shore A	All Size	Natural Rubber	NR	ASTM D2000 810
Coupling pin	All Size	Steel C 40	St	EN / DIN 10263 - 2



• Alternative Bush for higher power ratings is available on request

Bush 92° Shore A	All Size	Natural Rubber	NR	ASTM D2000 910	Torque 1.6 times of standard
Bush 92° Shore A (Yellow Colour)	All Size	Polyurethane	PU		Torque 1.8 times of standard
Bush 98° Shore A (Red Colour)	All Size	Polyurethane	PU		Torque 2.5 times of standard

• For temperature range of elastomers please see on page no. 47 - coupling selection

www.utlcoupling.com